

'INTERRA

—Developer of Uniqueness—

interratechnology.com



 **Interra KNX / DALI**
Gateway Series



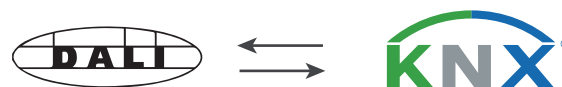
Interra KNX / DALI Gateways

A unique lighting atmosphere with maximum flexibility!

In addition to KNX building automation, DALI (Digital Addressable Lighting Interface) has become the most important lighting protocol in today's building management systems. With the Interra KNX / DALI Gateways, which support 1x64 and 2x64 channels, we bring together two of the world's most important building automation standards.

DALI devices (ballasts, etc. ECGs) connected to the line are fed with the internal DALI power supply, and up to 2x64 DALI ballasts can be supported. With each DALI channel, 16 groups, 16 scenarios, and 64 devices can be controlled.

In addition, independent emergency lighting according to EN 62386-202 is supported and emergency lighting tests (e.g. function and time test) can be triggered via the KNX line. Each DALI device can be controlled individually, in a group, or broadcast control.



Control Options

Interra DALI Gateway supports up to 64 DALI devices per channel and has possibility to create up to 16 DALI groups per channel. It has options for individual, group and broadcast control.



Programming via ETS.

Interra DALI Gateways can be commissioned via ETS without the need for any extra software. Also, it can provide commissioning by preserving the addressing of the addressed areas.



Emergency Lighting

Interra DALI Gateways provide control for emergency lighting and has automatic function and battery tests for emergency lighting products.



Fast Commissioning

Interra DALI Gateway has a quick and practical commissioning of repetitive parametric structures with the template structure.



Remote Update

Interra DALI Gateways has a remote software update function, so anytime a new software is released, you can upgrade your products.



Tunable White & RGB

Interra DALI Gateways can control tunable white ballasts and provide RGB control option.



Fault Check

Interra DALI Gateway can detect the defective ballast and lightings in the projects.



Integrated DALI PSU

With its integrated DALI Power Supply, Interra DALI Gateway feed the DALI lines.



Manual Control

Interra DALI Gateways can be controlled manually with its LCD screen and buttons.



All Benefits of DALI Technology on KNX

Combined Lighting Control and Emergency Lighting Functions

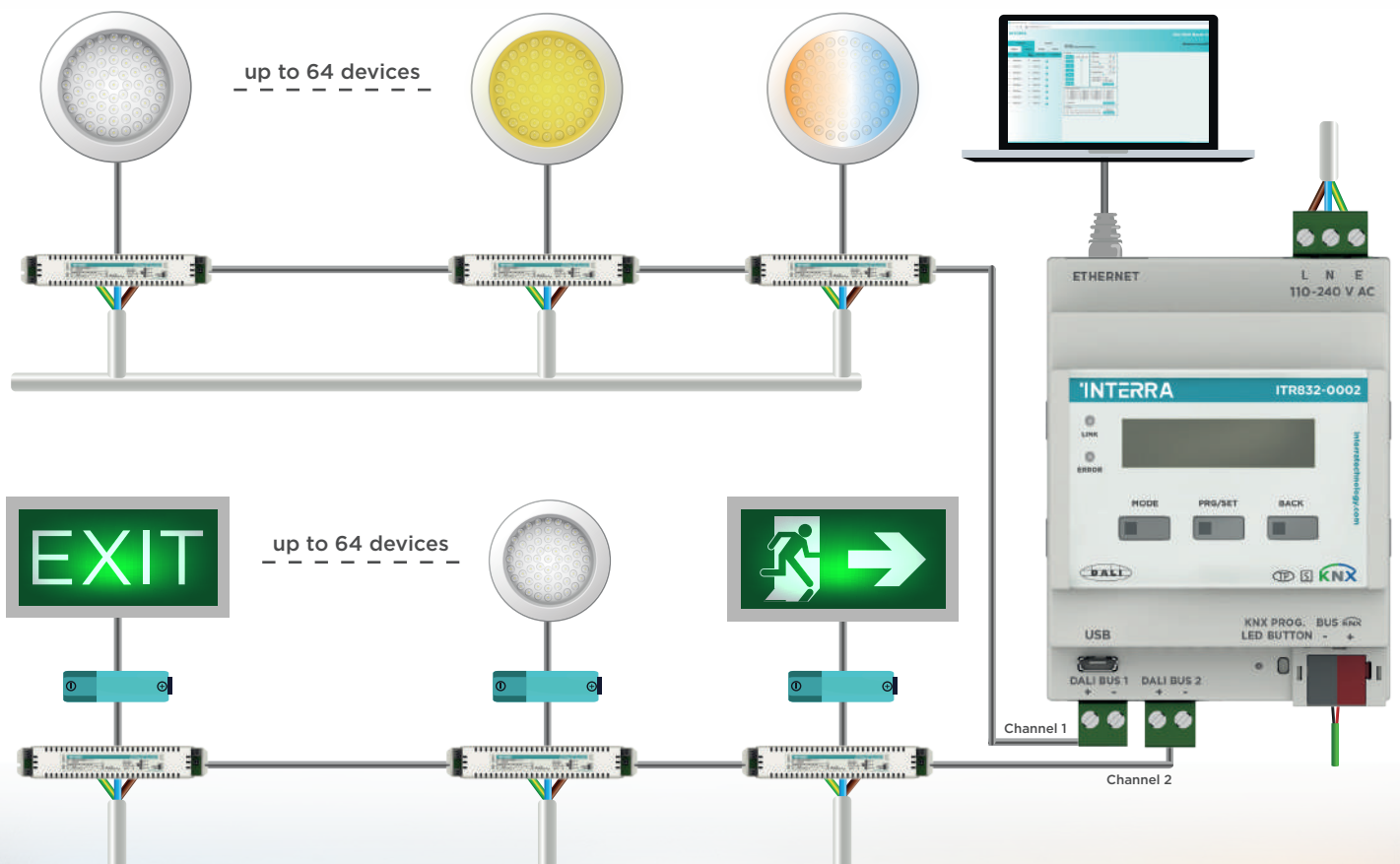
Flexible Lighting Experience with Lighting Groups

Individual Lighting Control

Improved Energy Efficiency with Constant Lighting Control



General Connection Diagram



Interra KNX / DALI Gateways

KNX / DALI Gateway Series



Interra KNX - DALI Gateway w/ Ethernet (1x64 DALI)

Product Code	Dimensions (W×H×D)	Notes
ITR832-0001	70 x 90 x 64.5 mm	Requires professional KNX installation.

Technical Details

KNX Line Current Con.: 13 mA	Power Consumption: 6 W
DALI Line Current Con.: 1 x 250 mA	DALI Voltage: Typical 19 V DC



Interra KNX - DALI Gateway w/ Ethernet (2x64 DALI)

Product Code	Dimensions (W×H×D)	Notes
ITR832-0002	70 x 90 x 64.5 mm	Requires professional KNX installation.

Technical Details

KNX Line Current Con.: 13 mA	Power Consumption: 13 W
DALI Line Current Con.: 1 x 250 mA	DALI Voltage: Typical 19 V DC



Interra KNX / DALI Gateway (1x64 DALI)

Product Code	Dimensions (W×H×D)	Notes
ITR832-0011	70 x 90 x 64.5 mm	Requires professional KNX installation.

Technical Details

KNX Line Current Con.: 13 mA	Power Consumption: 6 W
DALI Line Current Con.: 1 x 250 mA	DALI Voltage: Typical 19 V DC



Interra KNX / DALI Gateway (2x64 DALI)

Product Code	Dimensions (W×H×D)	Notes
ITR832-0012	70 x 90 x 64.5 mm	Requires professional KNX installation.

Technical Details

KNX Line Current Con.: 13 mA	Power Consumption: 13 W
DALI Line Current Con.: 1 x 250 mA	DALI Voltage: Typical 19 V DC

INTERRA

—Developer of Uniqueness—

Cumhuriyet Mh. Kartal Cd. Interra R&D Center
Kartal / Istanbul - Turkey

T: +90 216 326 26 40
F: +90 216 324 25 03
E: info@interra.com.tr

interratechnology.com



Interra KNX
Product Catalogue
Scan for pdf version.

